

LeMo-method | Copyright © 2014 by Frank E. Blokland | <http://www.lettermodel.org>

Template for Pilot Parallel Pen 6.0 mm (version 0.1)

generated with LeMo

In case of a translation over 30° , the stem width/thickness (perpendicular measured) is pen-width $\times \sin 60^\circ = 0.87$ pen-width.

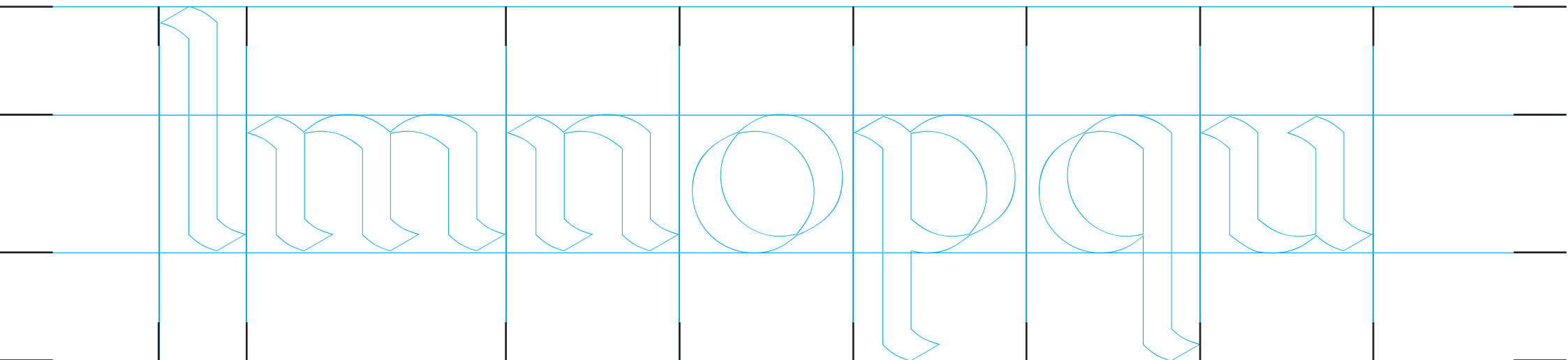
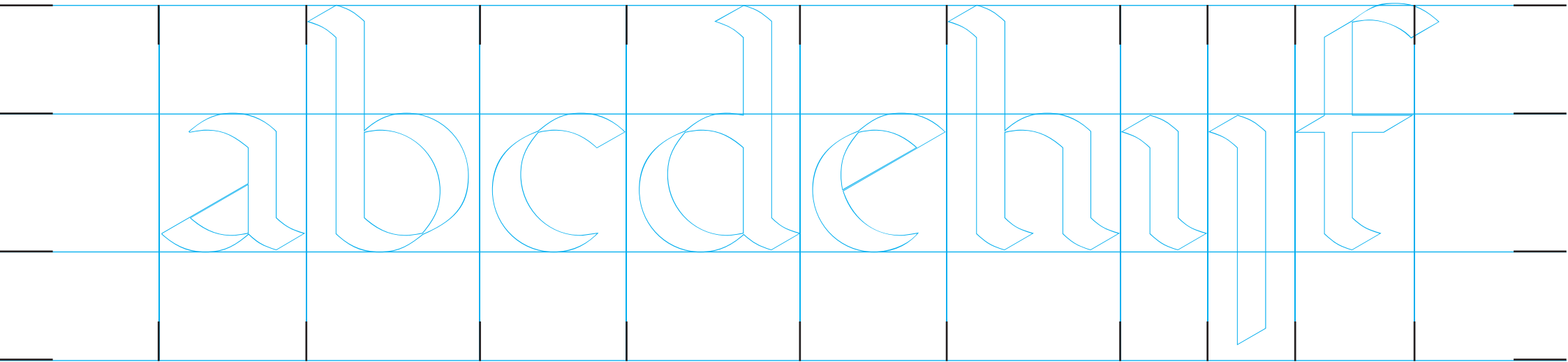
stem thickness: $6 \text{ mm} \times 0.87 = 5.22 \text{ mm}$

x-height: $5 \times 5.22 \text{ mm} = 26.1 \text{ mm}$

length ascender: $4 \times 5.22 \text{ mm} = 20.88 \text{ mm}$

length descender: $4 \times 5.22 \text{ mm} = 20.88 \text{ mm}$

body: 67.86 mm



a b c d e h i j t

l m n o p q u